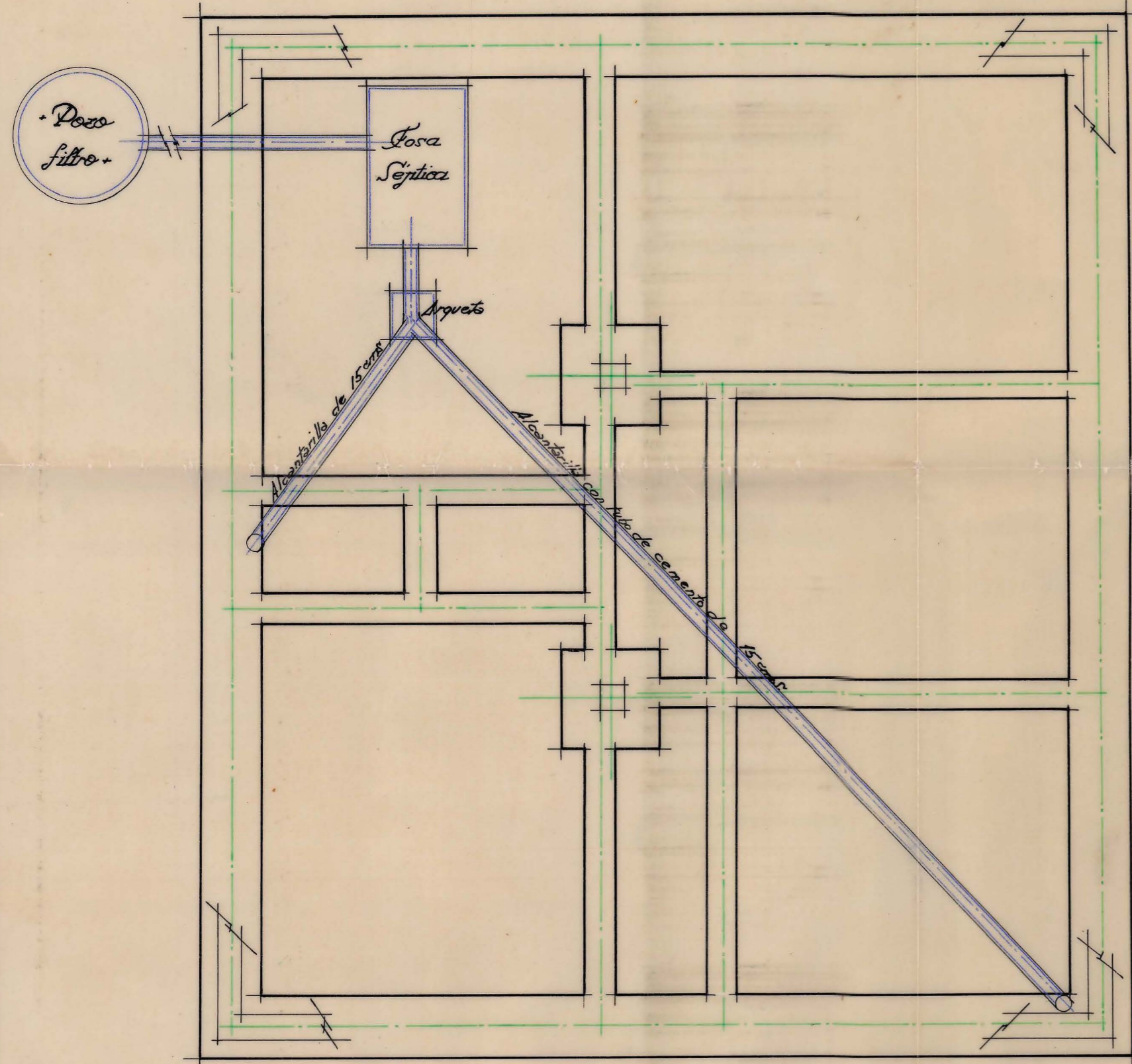
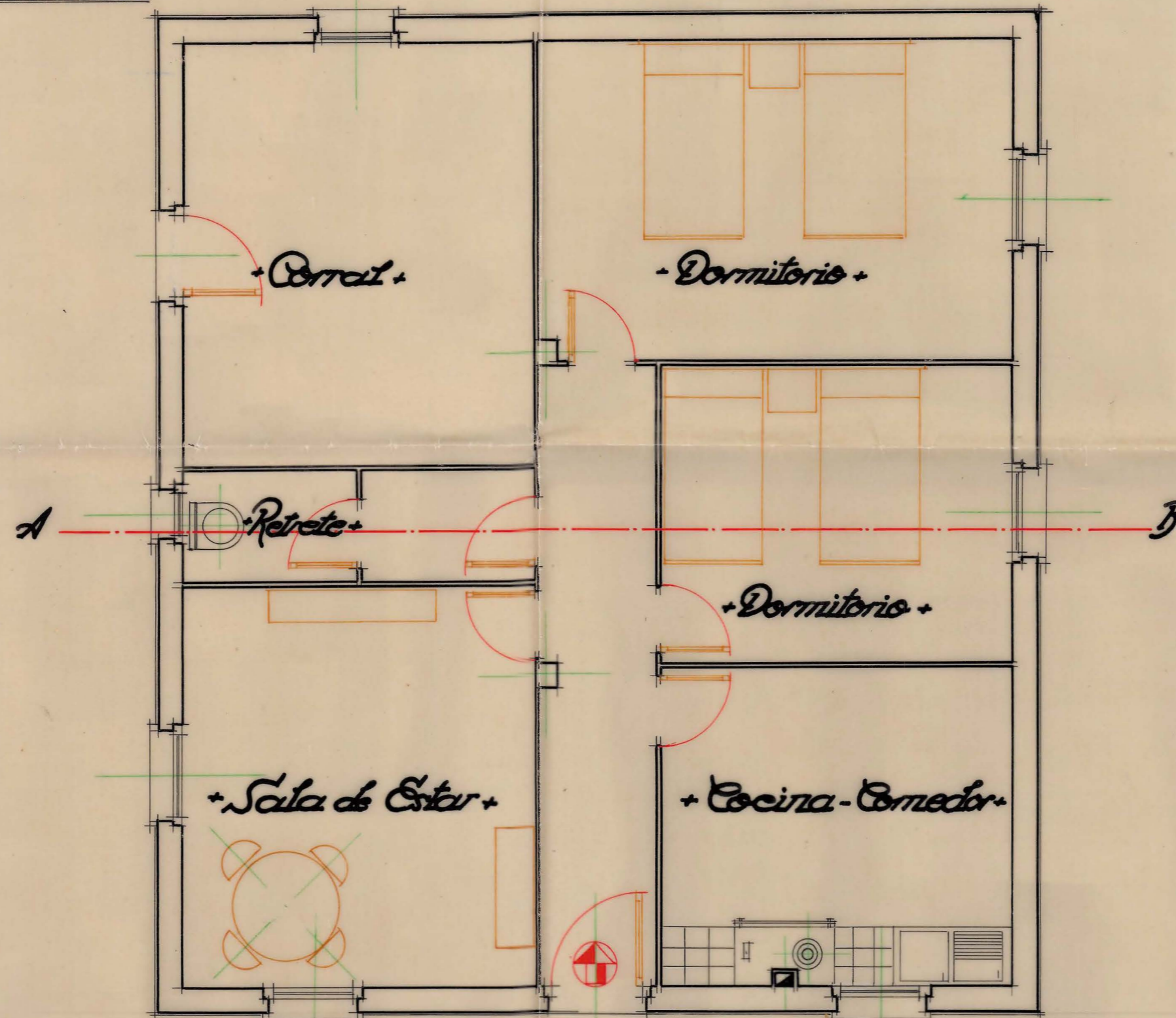


PLANOS DE UNA CASA RECIENTEMENTE CONSTRUIDA EN EL PUEBLO DE SAN ADRIAN (NAVARRA), Y PROPIEDAD DE D. VICTORIANO LESTADO.

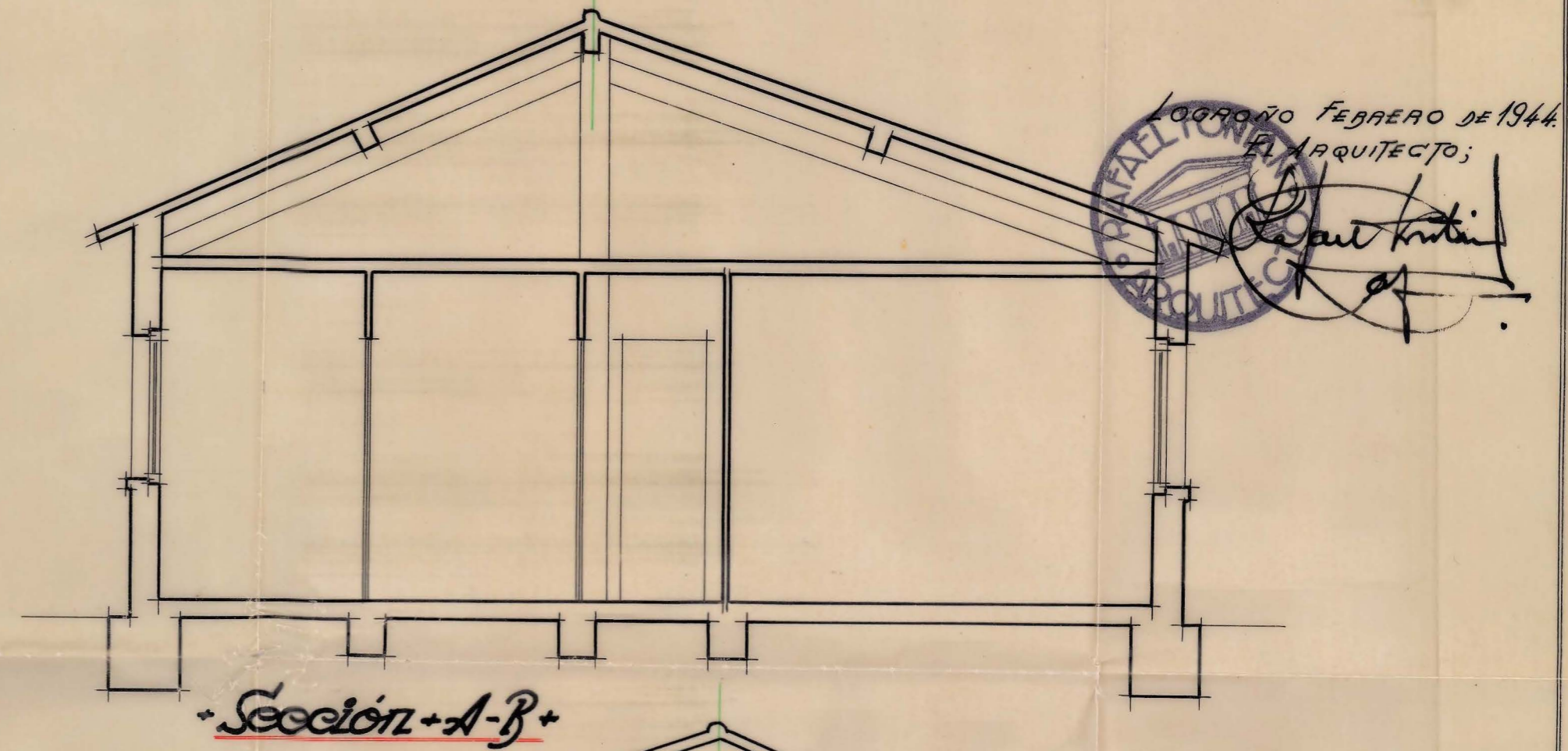
ESCALA 1:50.



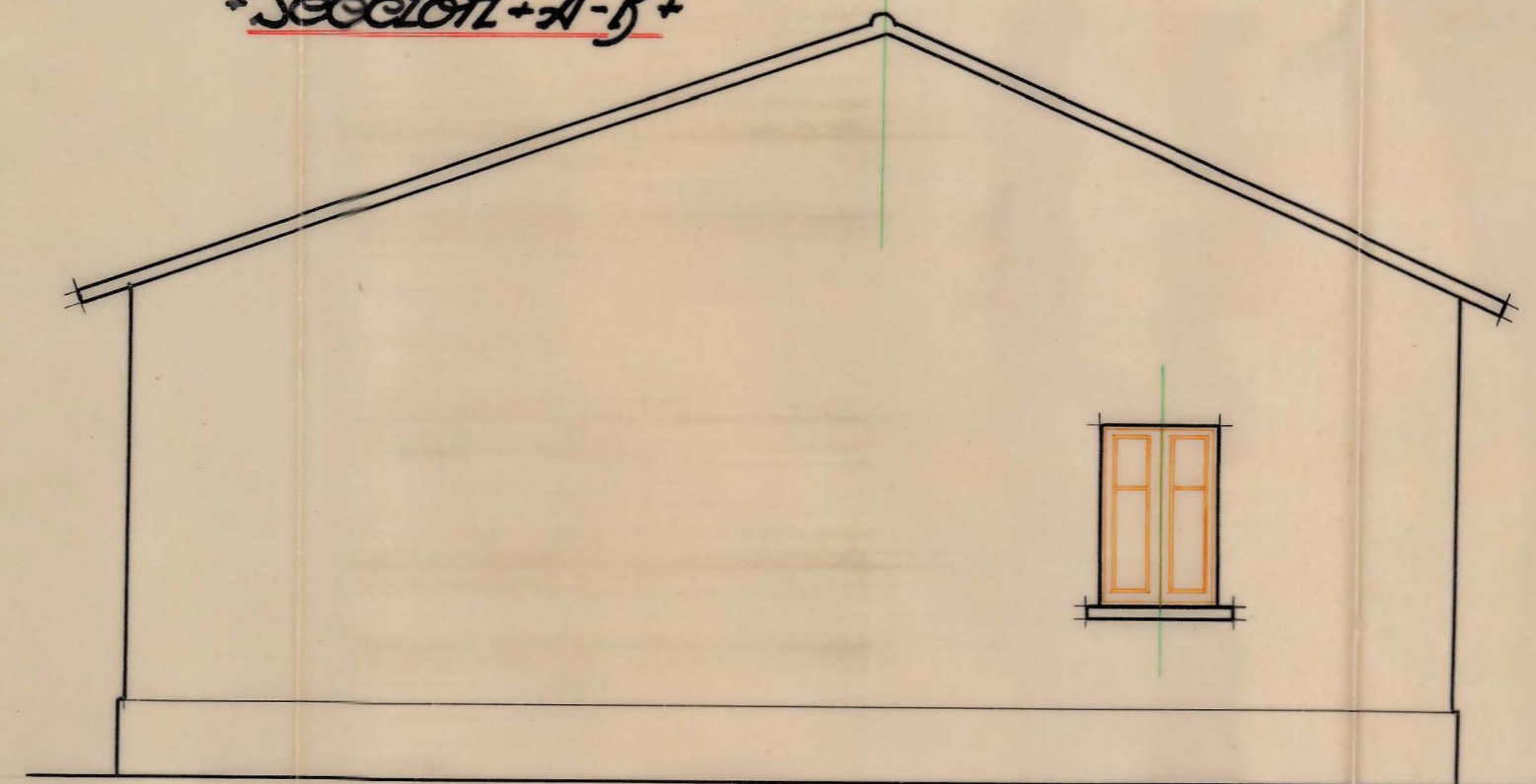
+ Planta de cimientos +



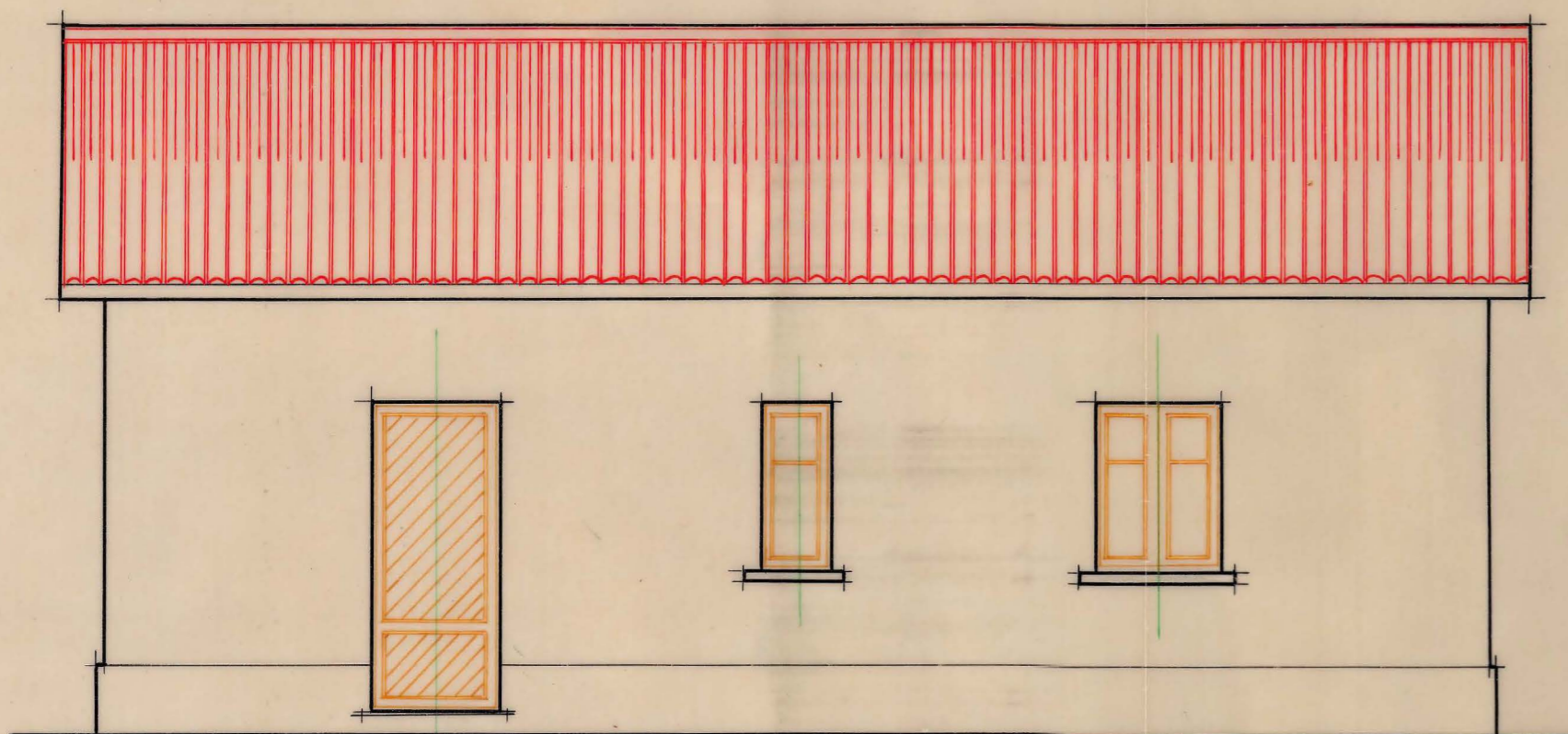
+ Planta-vivienda +



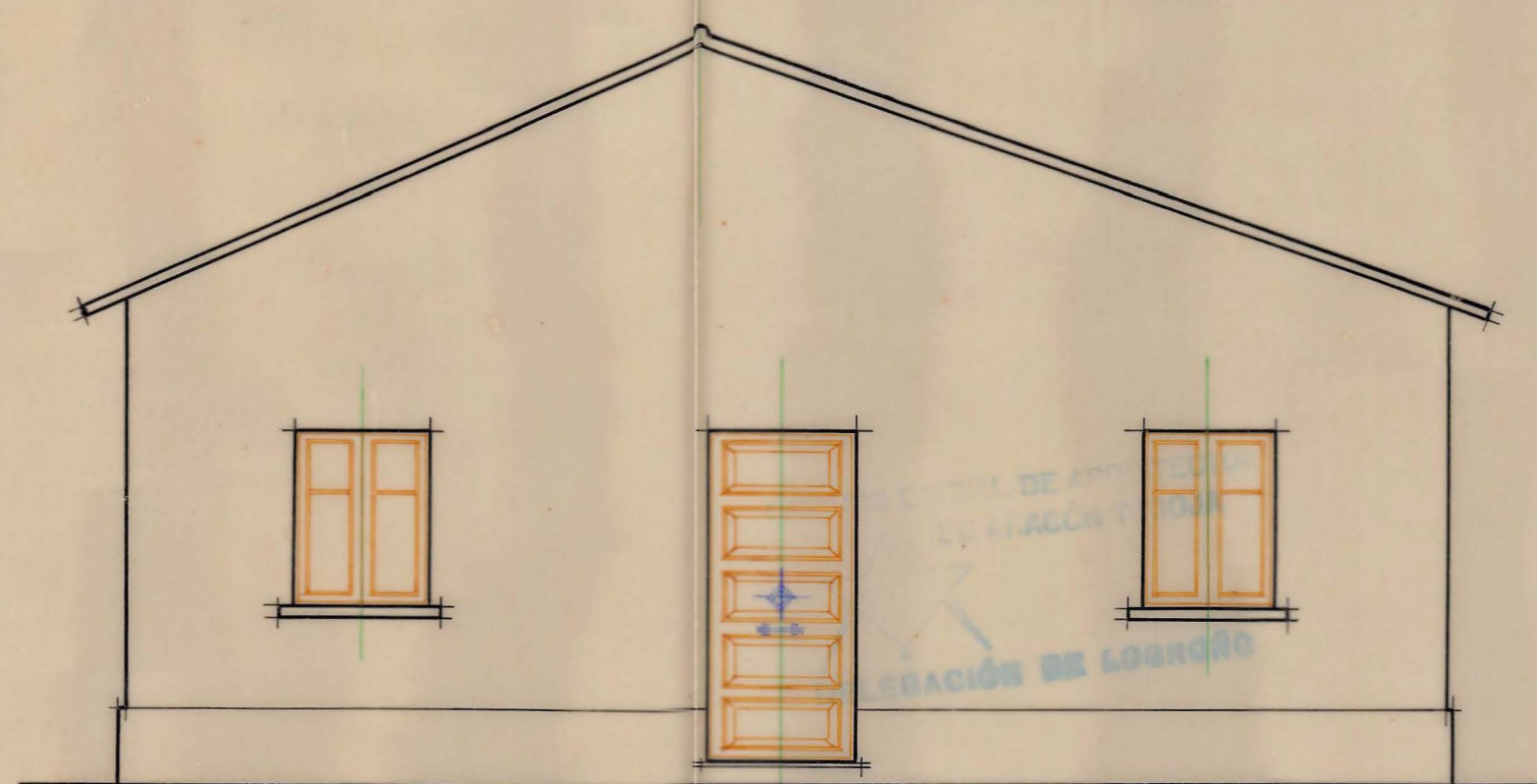
+ Sección A-B +



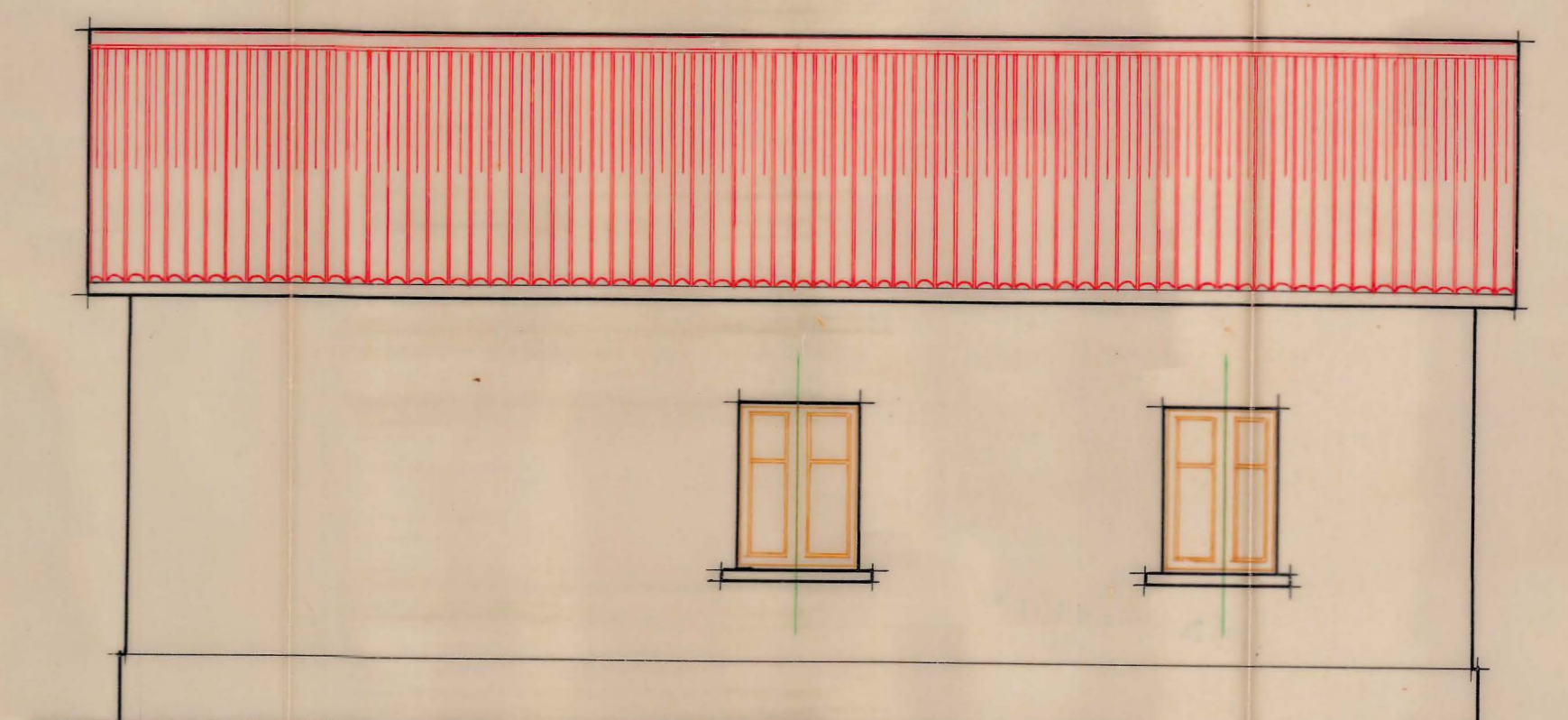
+ Fachada posterior +



+ Fachada lateral izda. +



+ Fachada principal +



+ Fachada lateral dcha. +

LOGROÑO FEBRERO DE 1944
 EL ARQUITECTO;
 [Signature]